



wernerworks

...in principle: storage



...in principle: storage

werner works is a family run, middle-sized firm, which has been a leading storage specialist for over 50 years. werner works develops and produces high quality, trend-setting office residential furnishings with substantial advantages for the user.

The specialist retailer is the distribution partner. At the heart of the production lines are flexible storage concepts and modular solutions for reception and work places. With structured product lines, werner works uses its strengths to complement specialist retailer's, with a need for flexibility in manufacture.

With this clear concentration on product ranges, werner works uses its standard assembly-to-order to offer the specialist retailer additional made-to-measure solutions.

All the werner works product components are obtained only from certified and qualified firms. werner works places particular emphasis on producing products of the highest quality, sustainability and longevity. The individual components are ultimately sustainable.

...werner works presents storage





basic S

Cupboard system

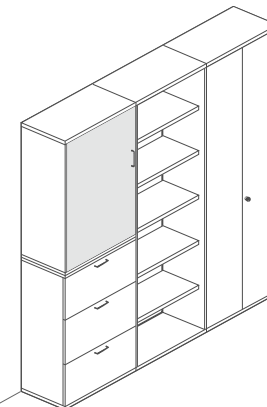
1.1

The cupboards are constructed from individual carcass elements. The carcass integrates the usual front variations such as swing doors, sliding doors and roller shutters. The modular assembly, with flexible height adjustment, allows cupboards to be placed one on top of the other, and thus being at the same height gives the appearance of continuously constructed cupboards. Clearly designed adjustable file heights (OH) and a strict measurement system make a multitude of combinations possible. The system is available as a standard production allowing assembly-to-order and easy product customisation. The material and colour spectrum offer appealing creative freedom.

basic S conforms to all the appropriate Guidelines and Standards – Test Standard 4554.

CONSTRUCTION

The carcass is bonded using a special warp-resistant PUR-synthetic foam composition. The corpus sides rest on the top and base. The back wall is always groove mounted and designed as an attractive back panel.





THE CORPUS PROGRAMME IS THE IDEAL COMPLEMENT
IN THE OFFICE AND IN THE PROPERTY.

Product description

CARCASS

Melamine resin coated chipboard according to DIN 68765, Emission Class E1.
Continuous edge protection profile: ABS plastic, rounded to a radius of 2 mm.
Inner organisation height adjustment, flexible for all organisational components,
Distance between height adjustment intervals 3.2 cm, corpus depth 43 cm.

TOP / BASE

Depth 43 cm, thickness 2.5 cm.

SIDES

Thickness 1.9 cm.

BACK-WALL

Thickness 0.8 cm – always groove mounted and designed as an attractive back panel.

PULLOUT BASE

Where selected, lies between 2 units stacked one on top of the other.
Thickness 0.3 cm, width 50 cm, usable depth 28 cm,
Colour powdered RAL 9006, possible from a corpus width of 80 cm.

SHELF BASE

Melamine resin coated chipboard according to DIN 68765, Emission Class E1.
Thickness 2.5 cm, depth 36.6 cm, drilled for pin shelf supports.

FLOOR ASSEMBLY

Adjustable feet (plastic) as standard: height 2.3 cm, adjustable range 1.0 cm.
Adjustable from inside.

Variations at an additional charge:

- Wooden plinth: height 6 cm, adjustable range 2.5 cm. Adjustable from inside.
- Square foot system (metal): RAL 9007, height 17 cm.
- Stand (metal) chrome: height 13 cm.

LOCK

Changeable cylinder lock with standard lock.
Alternatively other locks are available without extra charge.
Master key system available on request.

SWING DOORS

Thickness 1.9 cm, closing in front of the sides and against the top and bottom.
Melamine resin coated chipboard according to DIN 68765, Emission Class E1.
Continuous edge protection profile: ABS plastic, rounded to a radius of 2 mm.
Hidden hinges with an opening angle of 120 degrees.
With rotary bar lock and olive as standard.

Variations at an additional charge:

- Flat cylinder lock and grooved anodised aluminium bar handle EV1.
- Swing doors with an opening angle of 180 degrees.



Product description

SLIDING DOORS

Thickness 1.9 cm. Melamine resin coated chipboard according to DIN 68765, Emission Class E1. Continuous edge protection profile: ABS plastic, rounded to a 2 mm radius. With metal handle recesses, Ø 3 cm, as standard. Sliding doors slide invisibly within the corpus. Optional integrated damping system at additional charge. No visible runners in the flooring. Set-in aluminium runners in the top.

FRONT PANELS

Thickness 1.9 cm, the doors close in front of the sides and against the top and bottom. Melamine resin coated chipboard according to DIN 68765, Emission Class E1. Continuous edge protection profile: ABS plastic, rounded to a radius of 2 mm. With metal handle 12.8 cm, as standard. Other handle types available on request. Pullouts with end lock and central locking. Fully telescopic pullout with hidden guide and cushioned self-closing.

ROLLER SHUTTERS

Plastic shutters with structured surfaces. With metal handle 12.8 cm, as standard.



Cupboard types	40	60	80	100	120	138	160	180
Cupboards	2,3,4,5,6,7 OH - 36.2 -	2,3,4,5,6,7 OH - 56.2 -	2,3,4,5,6,7 OH - 76.2 -	2,3,4,5,6,7 OH - 96.2 -	2,3,4,5,6 OH - 57.2 - - 57.2 -	2,3,4 OH - 66.2 - - 66.2 -	2,3,4 OH - 77.2 - - 77.2 -	2,3 OH - 87.2 - - 87.2 -
Swing-door cupboards • door opening "right=standard"	2,3,4,5,6,7 OH - 36.2 - right/left	2,3,4,5,6,7 OH - 56.2 - right/left	2,3,4,5,6,7 OH - 76.2 -	2,3,4,5,6,7 OH - 96.2 -	2,3,4,5,6 OH - 57.2 - - 57.2 -			
Sliding door cupboards			2,3,4 OH - 76.2 -	2,3,4 OH - 96.2 -	2,3,4 OH - 57.2 - - 57.2 -	2,3,4 OH - 66.2 - - 66.2 -	2,3,4 OH - 77.2 - - 77.2 -	2,3 OH - 87.2 - - 87.2 -
Roller door cupboards • roller in one direction "right=standard"			2,3,4 OH - 66.2 - right/left	2,3,4 OH - 76.2 - right/left	2,3,4 OH - 96.2 - right/left	2,3,4 OH - 116.2 -	2,3,4 OH - 76.2 - - 56.2 -	2,3 OH - 76.2 - - 76.2 -
File cupboards			2,3,4 OH - 76.2 -					













Key points

- Moderately priced base variant
- Simple carcass cupboard programme with all types of closure
- Stackable modular system
- Perfect internal organisation
- Individual colour and material configuration



basic S

Shelving system

1.2

Functional and formally-structured shelving system with perfect internal organisation. In front of the carcass are sliding door elements at either continuous or split heights.

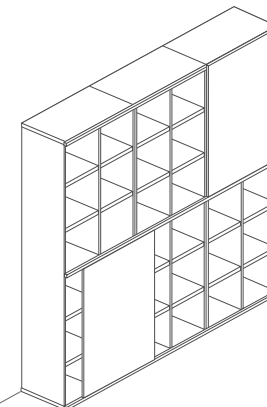
The shelving system is composed of single carcass elements and is compatible with the cupboard system, i.e. the same height and width. The shelves are set at a defined height and are flush with cupboard sides.

A particular element of this shelving system: the sliding doors are set in aluminium profiles and run in front of the carcass at either a continuous or at split heights. The profile is mounted in front of the horizontal base, corresponding to the length of the system. The shelving system is the ideal complement in the office and property.

basic S conforms to all the appropriate Guidelines and Standards – Test Standard 4554.

CONSTRUCTION

The carcass is bonded using a special warp-resistant PUR-synthetic foam composition. The carcass sides rest on the top and base. The back wall is always groove mounted and designed as an attractive back panel.





THIS SHELVING SYSTEM IS COMPATIBLE WITH THE CUPBOARD SYSTEM, I.E. THE SAME HEIGHT, SAME WIDTH AND STACKABLE ONE OVER THE OTHER.

Product description

CARCASS

Melamine resin coated chipboard according to DIN 68765, Emission Class E1.
Continuous edge protection profile: ABS plastic, rounded to a radius of 2 mm.

TOP / BASE

Depth 32 cm or 43 cm, thickness 2.5 cm.

SIDES

Thickness 1.9 cm.

BACK-WALL

Thickness 0.8 cm – always groove mounted and designed as an attractive back panel.

SHELVES

Melamine resin coated chipboard according to DIN 68765, Emission Class E1.
Glue fixed and flush with the corpus front edge.
Thickness 2.5 cm, depth 30.45 cm or 41.45 cm.

FLOOR ASSEMBLY

Adjustable feet (plastic), as standard: height 2.3 cm, adjustable range 1.0 cm.
Adjustable from inside.

Variations at an additional charge:

- Wooden base: height 6 cm, adjustable range 2.5 cm. Adjustable from inside.
- Stand (metal) chrome: height 13 cm.

SLIDING DOORS

Thickness 1.9 cm, without handles or lock. Reverse side fitted with tensioners on doors of over 4 OH.

Melamine resin coated chipboard according to DIN 68765, Emission Class E1.
Continuous edge protection profile: ABS plastic, rounded to a radius of 2 mm.

LOCK

Changeable cylinder lock with standard lock, other locks available at additional charge. Master key system available on request.

HANDLES

Variations at an additional charge:

- flush with the surface inset stainless steel handle recesses, Ø 6.5 cm.
- grooved anodised aluminium bar handle EV1.
- anodised flat handle in two lengths.

Cupboard type	80	80	120	120	160	240
	80	80 1-MW	120 1-MW	120 2-MW	160 1-MW	240 2-MW
Shelf system	1,2,3,4,5,6 OH	1,2,3,4, 5,6 OH	1,2,3,4, 5,6 OH	1,2,3,4, 5,6 OH	1,2,3,4 OH	1,2,3 OH
Depth: 32/43 cm	- 76.2 -	- 37.2 - - 37.2 -	- 57.2 - - 57.2 -	- 37.5 - - 37.5 - - 37.5 -	- 77.2 - - 77.2 -	- 75.5 - - 75.5 - - 75.5 -



WHETHER IN THE OFFICE OR HOME, THE SHELVING SYSTEM, WITH ITS INDIVIDUAL AND FUNCTIONAL FRONT DESIGN, SUITS ANY ENVIRONMENT.















im Prinzip:
Schrank...

werner works präzisiert den Stauraum



Key points

- Multiple application areas due to the functionality and design (commercial and residential)
- Glue fixed shelves, flush with the carcass throughout
- Individual front design (e.g. sliding doors)
- Individual inner design (e.g. swing doors, pullouts, etc.)
- Combinable with the cupboard system



basic S

Concealed track sliding door system

1.3

The economical space utilisation trackless door system offers the following advantages over the conventional storage system:

- no impediment to traffic circulation as with swing doors.
- unrestricted access to the inner cupboard space.
- completely lockable with only one lock.
- integrated damping system with self-closing mechanism.

This system is available in 3 to 8 file heights. Using a flexible organisation system, perfect interior organisation is guaranteed. The left / right design is determined by the door running in front of the system.

Design right: door running to the right "in front".

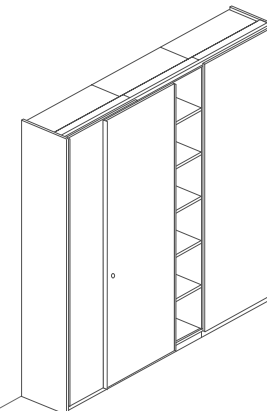
Design left: door running to the left "in front".

Free side: 46 cm or 49 cm deep.

Carcass sides with drilled rows at form height adjustment at 3.2 cm distance.

CONSTRUCTION

The carcasses are bonded using a special warp-resistant PUR-synthetic foam composition. The carcass sides rest on the top and base. The back wall is always groove mounted and designed as an attractive back panel.





Product description

CARCASS

Melamine resin coated chipboard according to DIN 68765, Emission Class E1.
Continuous edge protection profile: ABS plastic, rounded to a radius of 2 mm.
Inner organisation raster, flexible for all organisational components,
Distance between height adjustment intervals 3.2 cm, corpus depth 43 cm.

CLOSURE SIDE

Depth 46 cm or 49 cm, thickness 1.9 cm.

TOP / BASE

Depth 41.4 cm, thickness 2.5 cm.

SIDES

Depth 43 cm, thickness 1.9 cm.

BACK-WALL

Thickness 0.8 cm.

INDIVIDUAL ELEMENT WIDTHS

81.9 cm / 101.9 cm / 121.9 cm.

SHELVES

Melamine resin coated chipboard according to DIN 68765, Emission Class E1.
Thickness 2.5 cm, depth 41.2 cm, drilled for pin shelf supports

FLOOR ASSEMBLY

Wooden plinth: Height 6 cm, adjustable range 2.5 cm. Adjustable from inside.

TRACKLESS DOORS

Thickness 1.9 cm, with lock and aluminium bar handle. Reverse side fitted with tensioners on doors of over 4 OH.
Melamine resin coated chipboard according to DIN 68765, Emission Class E1.
Continuous edge protection profile: ABS plastic, rounded to a radius of 2 mm.

LOCK

Changeable cylinder lock with standard lock, other locks available without additional charge. Master key system available on request.

HANDLES

Grooved anodised aluminium bar handle EV1.

COVER PANEL

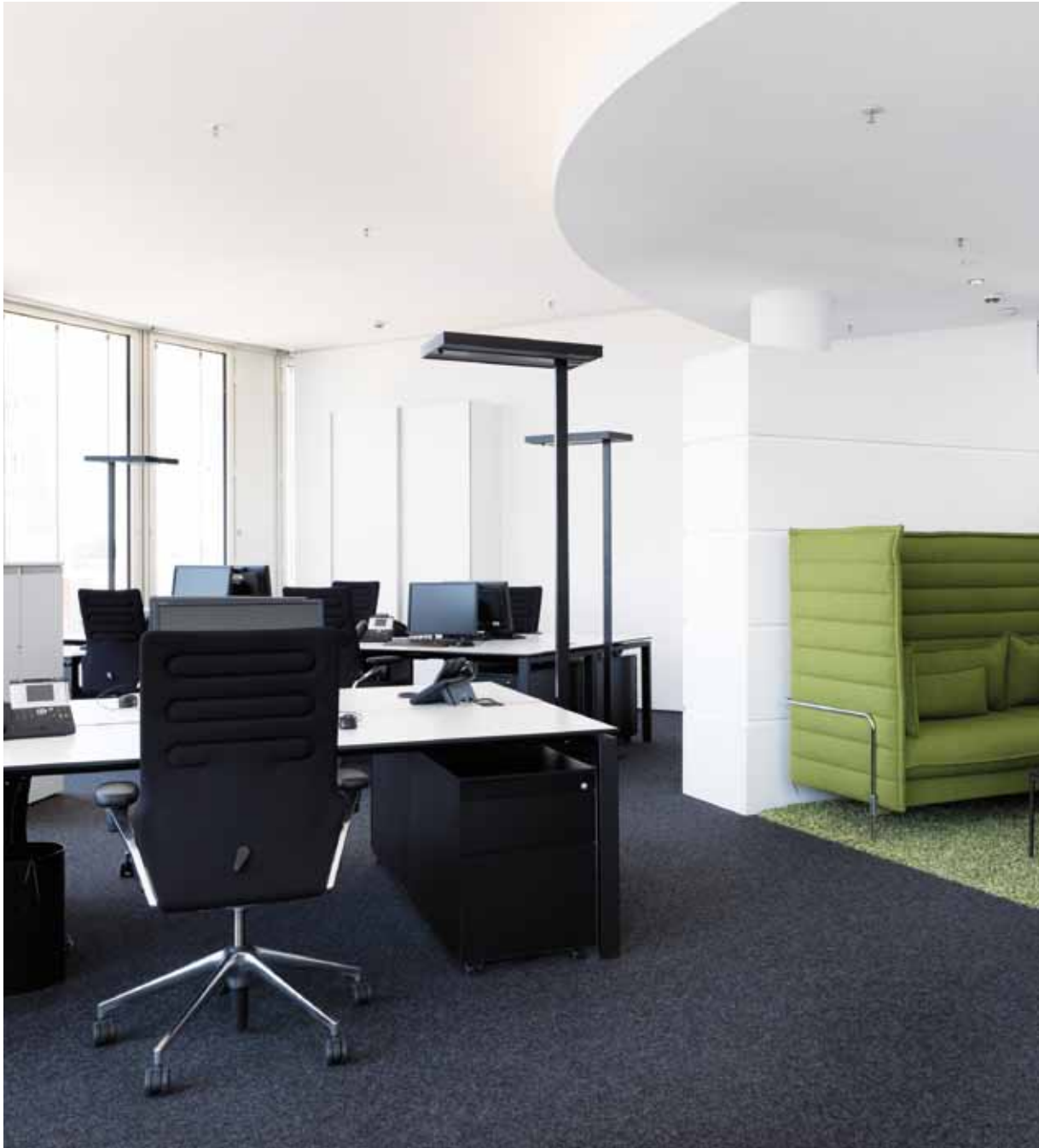
Depth 49 cm, thickness 1.9 cm (to 4 OH).

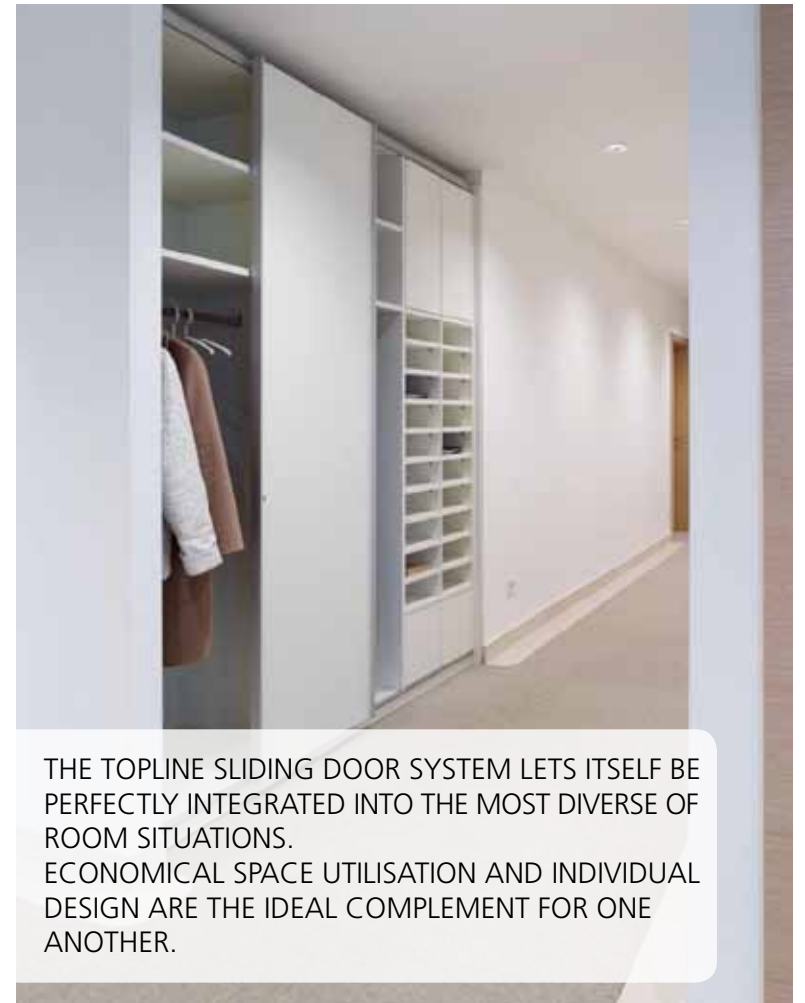
Cupboard type	Elements 81.9 cm	Elements 101.9 cm	Elements 121.9 cm
	165.7 cm	205.7 cm	245.7 cm
Trackless door system 2-Elements			
	247.6 cm	307.6 cm	367.6 cm
Trackless door system 3-Elements			











THE TOPLINE SLIDING DOOR SYSTEM LETS ITSELF BE PERFECTLY INTEGRATED INTO THE MOST DIVERSE OF ROOM SITUATIONS. ECONOMICAL SPACE UTILISATION AND INDIVIDUAL DESIGN ARE THE IDEAL COMPLEMENT FOR ONE ANOTHER.







A MIX OF MATERIALS OF THE HIGHEST FUNCTIONALITY AND DESIGN ALLOW FOR PERFECT INTEGRATION WITHIN THE PROJECT.



Key points

- Complete closure with only one lock
- Space efficiency
- Simple handling
- Standardised modules allow reorganisation and can be added on
- Elements up to 8 OH and up to 120 cm wide



basic S

Credenza

1.4

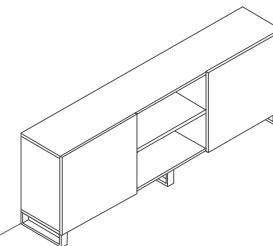
Storage space with an attractive appearance and individual interior space usage. An appropriate carcass which, using the particular front solutions, allows itself to be newly designed time and again, and so can fulfil the most varied requirements.

basic S combines the System principle with the credenza principle. A variety of door types, in front of the carcass with concealed track doors or in the carcass moving sliding doors, allow for partial or complete closure. This special front solution can be of value in the most diverse ways.

The inner organisation of the model series BSW is drilled in groups; the model series BSWS and BSWW inner organisation is drilled in rows.

CONSTRUCTION

The carcasses are bonded using a special warp-resistant PUR-synthetic foam composition. The carcass sides rest on the top and base. The back wall is always groove mounted and designed as an attractive back panel.



basic S FUNCTIONALITY AND PERFECT ORGANISATION, COMBINED WITH MODERN AESTHETICS.

Product description

CARCASS

Melamine resin coated chipboard according to DIN 68765, Emission Class E1. Continuous edge protection profile: ABS plastic, rounded to a radius of 2 mm.

TOP / BASE

Depth 43 cm, thickness 2.5 cm.

SIDES

Thickness 1.9 cm.

BACK-WALL

Thickness 0.8 cm – always groove mounted and designed as an attractive back panel.

SHELVES

Melamine resin coated chipboard according to DIN 68765, Emission Class E1. Thickness 2.5 cm, depth 36.6 cm, drilled for pin shelf supports.

BSW: Depth 41.2 cm.

BSWS: Depth 36.6 cm.

BSWW: Depth 36.6 cm.

FLOOR ASSEMBLY

Adjustable feet (plastic) as standard: height 2.3 cm, adjustable range 1.0 cm. Adjustable from inside.

Variations at an additional charge:

- Wooden plinth: height 6 cm, adjustable range 2.5 cm. Adjustable from inside.
- Stand (metal) chrome: height 13 cm.

TRACKLESS DOOR/ SLIDING DOOR

Thickness 1.9 cm. Melamine resin coated chipboard according to DIN 68765, Emission Class E1.

Continuous edge protection profile: ABS plastic, rounded to a radius of 2 mm.

BSW: (Trackless door) runs in front of the carcass.

Lock and various handle types available at extra charge.

BSWS: (Trackless door/Sliding door) door running inside as standard, with inset metal handle recesses, Ø 3cm (RAL 9006).

Multiple handle types available at an extra charge.

BSWW: (Trackless door for use in both directions) runs in front of the carcass in both directions. Lock and various handles types available at extra charge.

LOCK

Changeable cylinder lock with standard lock. Alternatively other locks are available without extra charge. Master key system available on request.

HANDLES

BSWS: (Concealed sliding track door/Sliding door) door running inside as standard, with inset metal handle recesses, Ø 3cm (RAL 9006).

Variations at an additional charge:

- flush with the surface inset stainless steel handle recesses, Ø 6.5 cm.
- grooved anodised aluminium bar handle EV1.
- anodised flat handle in two lengths.

Cupboard type	120	160	180	200	240
BSW Corpus element					
BSWS Corpus element					
BSWW Corpus element					



STORAGE SPACE WITH AN ATTRACTIVE APPEAR-
ANCE AND INDIVIDUAL INTERIOR SPACE USAGE.

A MORE IMPORTANT ASPECT:
THE LATER EXCHANGE OF THE FRONTS OFFERS
ADDITIONAL DESIGN POSSIBILITIES AND THEREBY
EXTENDS THE LONGEVITY.













Key points

- Value due to the unique door fittings
- Individual design using the front elements
- Simple handling
- Can be integrated into high-class environments (executive office)
- Single unit construction to a width of 240 cm
- Multiple design variations



system S

Unit system

2.1

The units in **system S** are separate carcass elements. The clearly defined adjustments for file height (OH) and the strict measurement system allows almost limitless combinations. All the possible closing systems, open shelves, roller shutters (horizontal and vertical), sliding doors, swing doors and drawers can be combined.

Aside from the usually cuboid forms of the units, the system integrates various round and curved carcass elements and offers the planner huge possibilities in design as well as new functional wall unit solutions. The large selection of materials and colours ensures that the units can be perfectly integrated into the existing office surrounding.

CONSTRUCTION

The carcass elements can be used as single units or can be combined to wall units. The carcasses are bonded using a special warp-resistant PUR-synthetic foam composition. The removable cover plate ensures that the units can be combined creatively and can still be changed at a later date.



Product description

CARCASS

Melamine resin coated chipboard according to DIN 68765, Emission Class E1. Continuous edge protection profile: ABS plastic, rounded to a radius of 2 mm. Inner organisation height adjustment, flexible for all organisational components, Distance between height adjustment intervals 3.2 cm.

INNER SIDES

Rows drilled at the height adjustment interval of 3.2 cm (drilled in groups with shelves, sliding door units and glass fronted units). The holes are designed for shelf supports and other organisational components.

BACK-WALL

Groove mounted – on all sides and glued, same colour as the corpus, except when the carcass is delivered in pear wood/cherry decor when it is in black. Thickness 0.8 cm – always grooved mounted and designed as an attractive back panel. Back for Ronda 0.3 cm.

FLOOR ASSEMBLY

Adjustable feet (plastic) as standard: height 2.3–3.3 cm, adjustable range 1.0 cm. Adjustments from inside.

Variation at additional charge:

- Wooden pedestal: Height 6 cm, adjustable range 2.5 cm. Adjustment from inside.
- RHS- frame (metal): RAL 9007, height 17 cm.

LOCK

Changeable cylinder lock with standard lock (No. 18001).

Alternatively other locks are available without extra charge.

Master key system available on request.

(Horizontal-roller shutter = cam lock, sliding doors = push button cylinder, Swing door = rotary bar lock).

SWING DOORS

Thickness 1.9 cm closing against the sides, top and bottom.

Melamine resin coated chipboard according to DIN 68765, Emission class E1. Continuous edge protection profile: ABS plastic, rounded to a radius of 2 mm. Hidden door hinges opening to 120 degree.

As standard with rotary bar locks and olive.

Variation at additional charge:

- Flat cylinder lock and grooved-in anodised aluminium strip handle EV1.
- Swing door hinges with opening angle of 180 degrees.

ROLLER SHUTTERS

Plastic shutters with structured surfaces as standard with grooved anodised aluminium bar handle.

Variation at additional charge:

Wooden roller shutter from 3 layers of parallel plywood entirely covered with linen and paintable foil, decor foil or veneer. Wooden roller shutters irrespective of decor are only available to a height of maximum 3 OH.

The vertical roller shutter is not available with decor.

PILLAR STRIP

Covered MDF-profile

system S IS A MODULAR CARCASS PROGRAMME
INTEGRATING ROUND AND CURVED ELEMENTS.

SLIDING DOORS

Thickness 1.9 cm.
Melamine resin coated chipboard according to DIN 68765, Emission class E1.
Continuous edge protection profile: ABS plastic, rounded to a radius of 2 mm.
Grooved segment bar handle as standard.
Sliding doors guided invisibly in the carcass without visible runners in the base and optionally with integrated damping system.
Aluminium runner set in groove in the top.

FACINGS

Thickness 1.9 cm completely set onto the sides. Melamine resin coated chipboard according to DIN 68765, Emission class E1. Continuous edge protection profile: ABS plastic, rounded to a radius of 2 mm.
Segmented bar handle as standard. Other handle types on request.
Pull-outs with end lock and central locking
Fully telescopic pull-out with hidden guiding and cushioned self-closing.

INTERMEDIATE FRAME

The intermediate frame is set onto the lower carcass when cabinet pillars are provided. When Ronda units are ordered, the intermediate frame and its shelf are not fitted. Here only an intermediate surface can be fitted.

DEPTH

Top surface 45.5 cm	Shelf 35.0 cm
Carcass 44.5 cm	Plinth base 40.2 cm

MATERIAL DIMENSIONS

Top surface	1.9 cm
Top/Bottom	2.5 cm
Swing door and register	1.9 cm
Sides/doors	1.9 cm
Shelves	1.9 und 2.5 cm

UNIT TYPE / WIDTH

Swing doors	40, 60, 80, 100, 120 cm
Horizontal roller shutter	80, 100, 135, 160, 180 cm
Vertical roller shutter	60, 80, 100 cm
Sliding doors	80, 100, 120, 135, 160, 180 cm
Shelving	40, 60, 80, 100, 120, 135, 160, 180 cm





Key points

- Round units
- Long life
- Separate covering
- Flexible measurements
- Stackable modular system



cockpit

Reception system

2.2

cockpit is a universal modular system for workspaces with a high proportion of personal communication. Its speciality: seamless integration of storage space into the work area. The system consists of different modular carcasses and work surfaces with facings – basic elements which can be combined freely. A multitude of surfaces and colours create extra design spaces.

cockpit combines the units of the **system S** in many variations with work surfaces and cabinets. A variety of unit types, shapes, width and heights are the base for functional planning of the work space. Storage space and work surface can be combined in a functional and aesthetic way.

CONSTRUCTION

The cockpit-system consists of work surface with integrated hidden cable channels. Individual facings and counter tops as well as cabinets neatly finish off the system. The unit system **system S** can be seamlessly integrated.

A DISTINCTIVE FEATURE OF **cockpit** IS THE ATTRACTIVE ACRYLIC GLASS FACING THAT ALLOWS THE USE OF "ACCENTUATED LIGHTING".

Product description

WORK SURFACES

The work surfaces are the core of the cockpit system.
All work surfaces are according to the EU - Computer monitor Guideline.
They can be combined in many different ways with the units.
All measurements for connections are coordinated with each other.

SCREENS/PERFORATED SHEET METAL

Perforated metal screens – hung under the work surfaces – work as visual screen and at the same time are an attractive visual accent.
Standard colour is RAL 9006. Other colours are available at extra charge.

CONTINUOUS FACING

Continuous facing for the front with adjustable feet.
Frame construction with grooved mounted facing material.
Facing types/versions:
1) Wood derived material closed/painted
2) Perforated wood/painted
3) Translucent acrylic facing
4) Single sided high gloss finish

ELECTRICS

Optional on the underside of the work surface.
A cable exit leads the cables under the work surface into the flexible cable channels. Via vertical cable channel the connection are lead to the floor inlet.

LIGHTING

Optional back-light translucent acrylic-facing.
Built-in strip light for indirect lighting of the continuous lower facing.
Choice of white, red or green light.

COLOUR

Any RAL or Pantone are possible for that modesty panel, tambour door, draw front and side panel.

RECCOMENDATION

In principle cockpit can be combined with all system S-units.
However, we would recommend tambour door units for space utilisation.











cockpit INTEGRATES STORAGE SPACE SEAMLESSLY INTO THE WORKSPACE AND IS ERGONOMIC.



Key points

- Unbeatable value for money
- Can be planned and used individually
- Perfect integration of storage space into the work place
- Easy assembly
- Individual and modern materials and colours

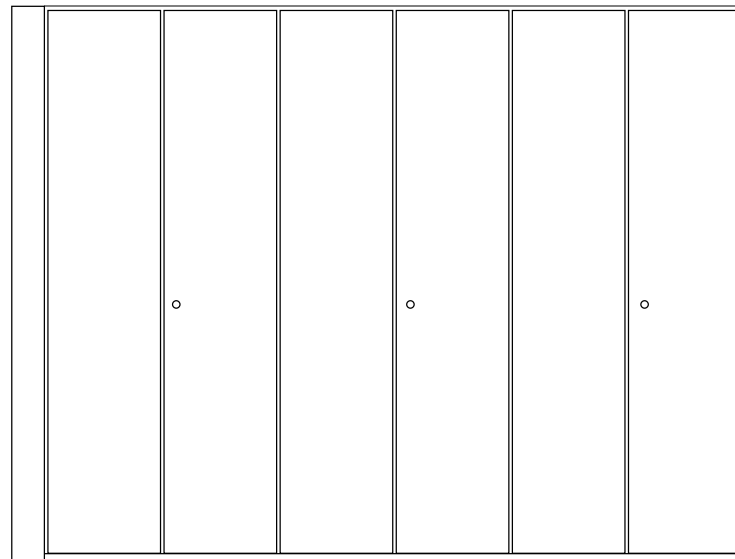
Easily movable wall unit system accommodating up to eight levels of folders, one above the other. The front with continuous doors.

CONSTRUCTION

Wooden framework. Wall unit sides fitted to the top and bottom via cam locks and additional hard wood plugs. Back wall built in using a plastic double edge channel. Shelf holes drilled through at height adjustment intervals of 3.2 cm, flexible usage of the organisational aids possible.

System depth: 43 cm, 59 cm

System width: 40 cm, 50 cm, 60 cm, 80 cm, 100 cm





Product description

CARCASS	Melamine resin coated chipboard according to DIN 68765, Emission class E1, Continuous edge protection profile: ABS plastic, rounded to a radius of 2 mm.
SIDES	1.9 cm Melamine resin coated chipboard, white.
TOP/BASE	1.9 cm Melamine resin coated chipboard, white.
BACK-WALL	0.8 cm Melamine resin coated chipboard, white.
PLINTH PANEL	1.9 cm Melamine resin coated chipboard, white, height 7.0 cm.
SHELFs	1.9 cm/2.5 cm Melamine resin coated chipboard, white. <i>Variations at additional charge:</i> Steel shelving for standard width of 80 cm, 100 cm in RAL 7035.
DOORS	1.9 cm Melamine resin coated chipboard, white. To 6.5 OH according to Melamine colour chart werner works. From 6.5 OH in Melamine white.
LOCK	Twistable olive handle with integrated lock. <i>Variations at additional charge:</i> Grooved anodised aluminium strip handle EV1 with flat cylinder lock. Swing door hinges: Hidden version opening at 120 degrees. Unhindered use of the organisers. <i>Variations at additional charge:</i> Opening angle of 180 degrees.
LOCK SYSTEM	Changeable cylinder lock with standard lock. Alternatively other lock systems without extra charge. Master key systems on request.
HEIGHT ADJUSTMENT	Integrated into the side and can be easily adjusted via a through bore-hole in the floor. Continuous plinth panel: Height 7.0 cm.

Key points

- Flat-packed delivery
- Individual fitting
- Cost efficient
- Door heights up to 300 cm
- Perfect and uniform joints

Details, Materials and Colours

Combining different materials and surfaces offers the opportunity to use the **werner works** systems the most diverse scenarios, use and thus offer the greatest individuality in the project. This individuality can be a deciding factor for success.



FLEXIBLE ORGANISATION



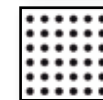
LAQUERED SURFACES



INTEGRATED WHITEBOARD



PINABLE SURFACES



SOUND ABSORBANT SURFACES



INDIVIDUAL FABRIC COVERING

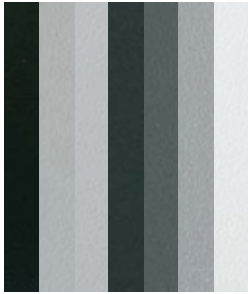


INDIVIDUAL DECOR



HANDLE VARIETIES





MELAMINE

Direct-coated base boards in more than 14 different wood and single colour melamine with the respective edge band. The surface is melamine resin coated. Different melamine from other manufacturers are available on demand.



LAMINATE

An individually laminated base board. This material is available in many different melamine such as the Resopal collection by Lars Contzen. Please enquire about these designs.



VENEER

Real wood veneered carrier board available in more than seven different types of wood with matching edge band. Open pore surface finished in matt paint. Individually tailored veneers are available on request.



ACOUSTIC MATERIALS

Whenever these acoustic elements are used as doors or backs the sound is absorbed perfectly by the open-pore surface. Sound enters through the micro pore surface into the tightly constructed wafer structure which absorbs perfectly. This material is available in different versions both veneered and laminated.



HIGH POLISH

MDF/ base boards covered with a highly polished acrylic laminate with matching edge band. This surface is available in eight different colours.



FABRIC

Fabric covered doors and backs that can be pinned-to are made from 13 mm base board, a 5 mm soft-board and individual fabric covering. The fabric backs are grooved mounted flush with the adjacent surfaces. This version can also be built in a sound-proofed version.



LACQUER

A matt lacquered wood derived material. The lacquer is applied in two layers and is sealed with a top lacquer. Optionally available is a version offering "soft touch" finish. The lacquered surfaces hide all marks from the edge band. All colours from the palettes of RAL, Sikkens, NCS and Pantone are available.

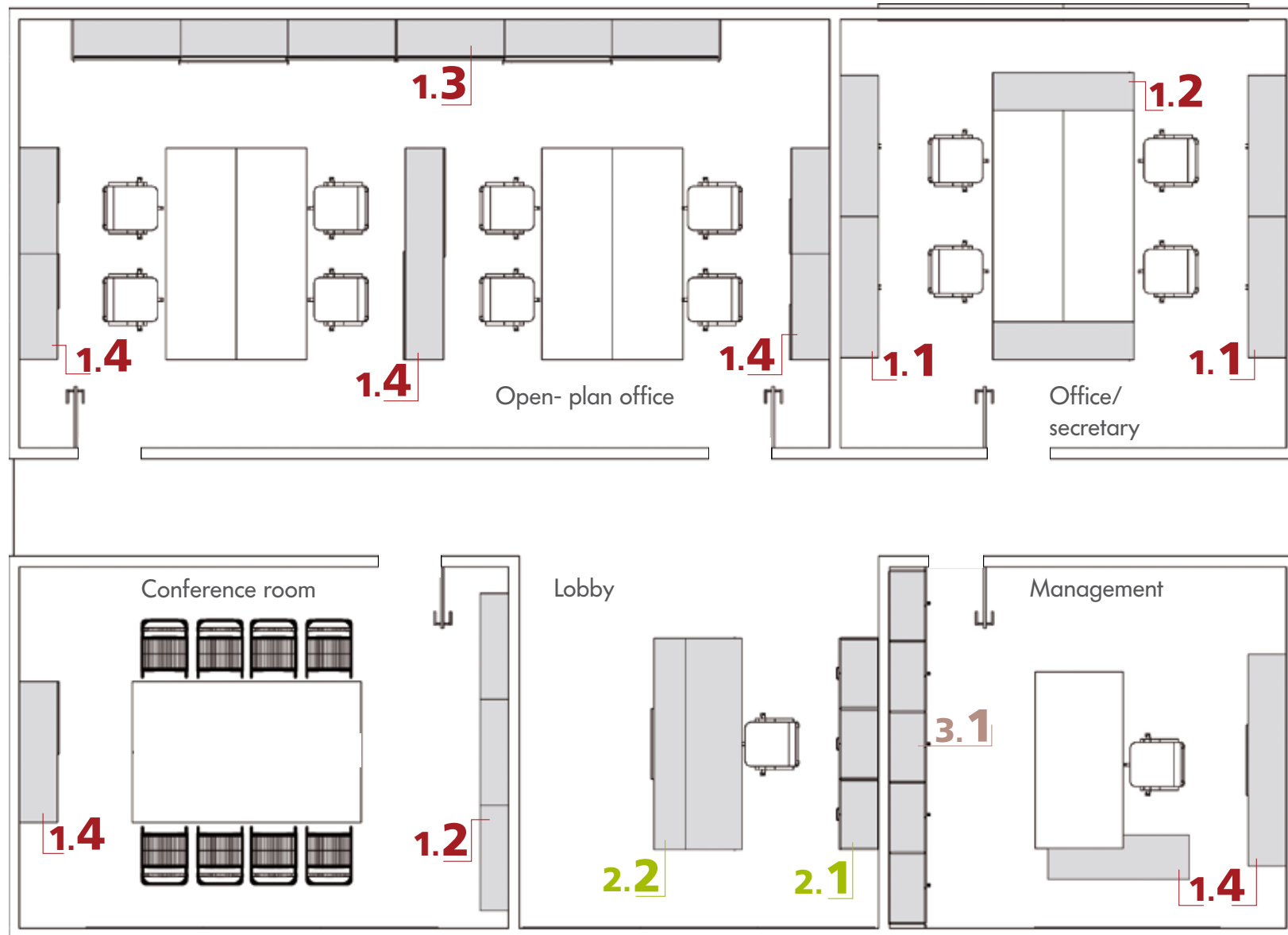


HANDLES

A large number of different varieties of handle are available as standard. Fabric doors and hung sliding doors feature a full width aluminium strip handle. This can also be used for sliding doors and swing doors. For individual requests please enquire.

Sample Project

This sample project demonstrates all **werner works**. Depending on the requirement, the different systems can be configured according to the needs of the individual user. Reception area systems and complete storage solutions have been impressively demonstrated in this project.



References

Arthur D. Little
Frankfurt

A.T. Kearney GmbH
Top management consultancy
Düsseldorf

BCW
Education centre for economy
Essen

Beazley Group plc
Specialist Insurers
London

Deutsche Bundesbank
Chemnitz branch

Ernst & Young GmbH
Auditing and accounting firm
Berlin, Hamburg

Fraunhofer-Institut
Magdeburg

Freshfield Bruckhaus Deringer
International law firm
Hamburg, Frankfurt

Grey & Wolff
Advertising agency
Hamburg

Hans Lehmann KG
Shipping company
Lübeck

Heinrich-Heine-Universität
Oeconomicum
Düsseldorf

Gebr. Heinemann KG
Hamburg

Lovells LLP
International lawyer firm
Düsseldorf

LRI County bank
Rheinland-Pfalz
International S.A.
Luxemburg

Merck Finck & Co.
Private banker
Düsseldorf

MPA Pharma GmbH
Hamburg

Neumann Gruppe GmbH
Hamburg

OLON SE
Berlin

National and city library
Augsburg

German Cities Council
Baden-Württemberg
Stuttgart

Tecis financial services AG
Hamburg

T-Online AG
Darmstadt

tretford
Weseler Teppich
GmbH & Co. KG

University hospital
Carl Gustav Carus
Dresden

Wuppertal public services AG
Wuppertal

WilmerHale
Law firm
Frankfurt

ZMB –
Centre for molecular biology
Graz

werner works...

- Reliability and personality combined with high professional competence
- Family owned company without red tape
- Series production gives versatility through flexibility and high vertical integration
- Storage as core competence

... in principle: Storage

werner-works

...in principle: storage

werner works Vertriebs GmbH
Königsberger Straße 7-11
32339 Espelkamp
Germany

phone. + 49.5772.201 0
fax. + 49.5772.201 70

info@werner-works.de
www.werner-works.de

Conception & Design
Süd.Com GmbH, Stuttgart

www.suedcom.info